

WELCOME



Trinity College

UNIVERSITY OF TORONTO

George Ignatieff Theatre

This is your guide to accessing the
Theatre.

Table of Contents

WELCOME	1
MAP	3
PARKING.....	4
BICYCLE ACCESS	5
ACCESSIBLE ROUTE.....	6
ACCESSIBLE PATH.....	7
FRONT ENTRANCE	8
THEATRE LOBBY	10
ACCESSIBLE WASHROOMS.....	11
MAIN AUDITORIUM	12
Thank you!	13
Acknowledgements.....	14

MAP

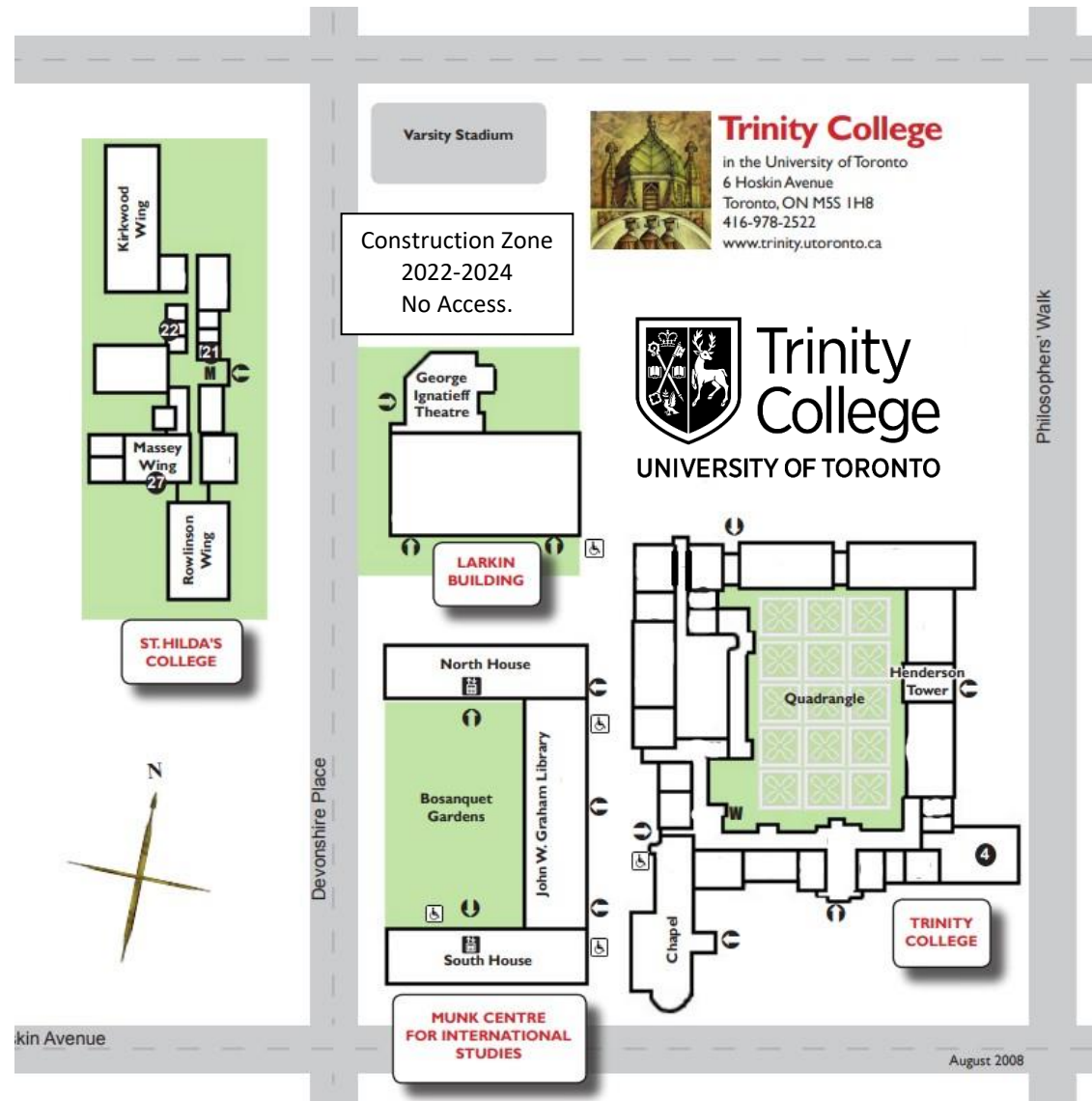
This is a map of the Trinity College Campus.

The George Ignatieff Theatre is in the Larkin Building, 15 Devonshire Place. North-West corner.

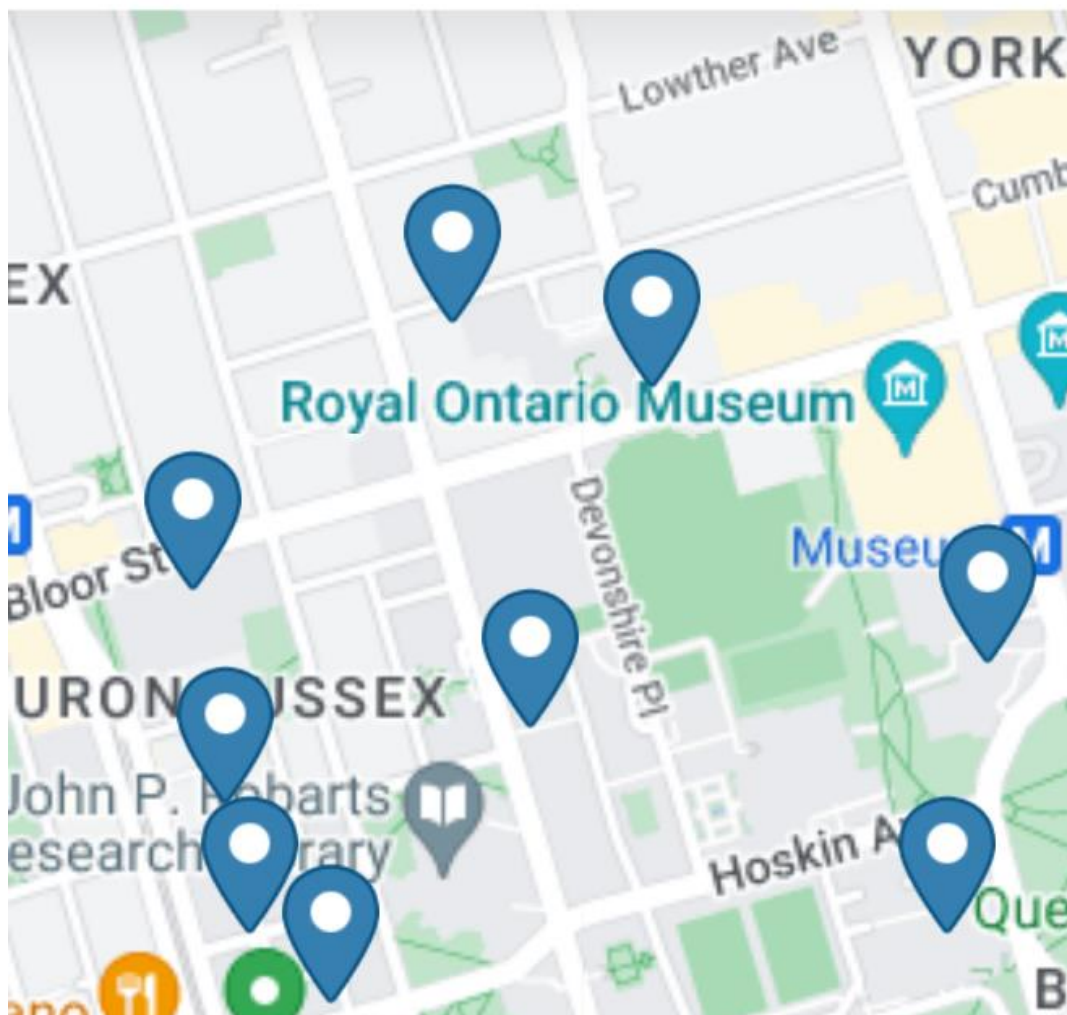
The entrance to the theatre is through the lobby.

The theatre is accessed from the outside, using the West stairs on Devonshire Place or the South ramp between the Munk Centre and Trinity College.

The theatre is accessed from the inside through the Buttery (Trinity Cafeteria) on the ground floor of the Larkin Building.



TRANSPORTATION SERVICES



PARKING

City of Toronto meter parking is available on Devonshire Place in front of the theatre. If these spots are not available, there is Green P parking one block away, across from the St. George Subway Station at Bedford and Bloor.

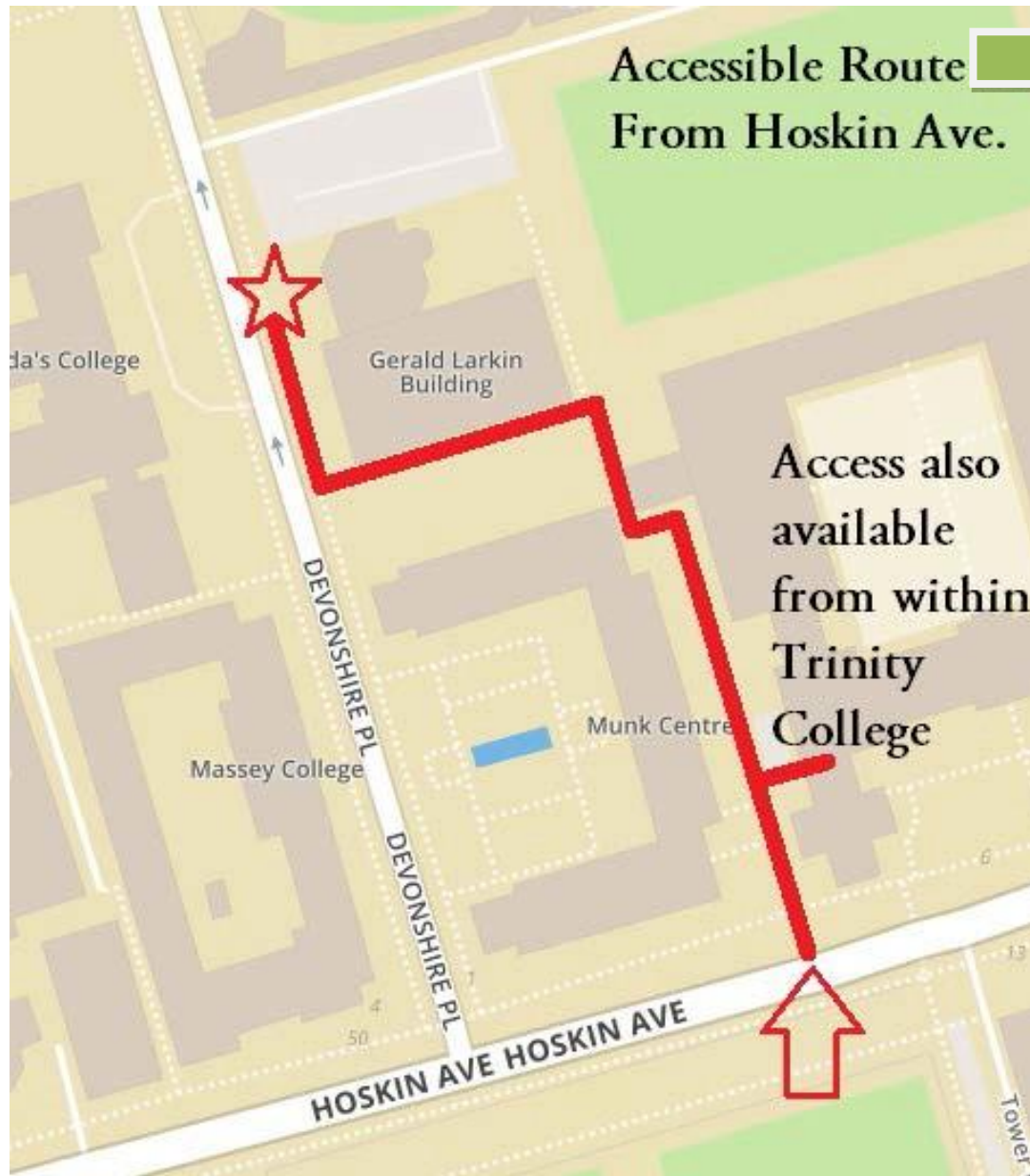
The image to the left is from the University of Toronto Transportation Services website. They maintain a dynamic parking map with information about pricing on their website [University of Toronto Transportation Services \(utoronto.ca\)](https://utoronto.ca/transportation-services)

BICYCLE ACCESS

If you commute by bicycle, there is a bike rack located behind the Larkin Building where you are welcome to park.

If you use Bike Share, there are two drop-off points nearby: Bloor & St. George, as well as St. George & Hoskin.





ACCESSIBLE ROUTE

If you end up at our mailing address (6 Hoskin Avenue) or if you are using our accessible entrance, follow the path between the Trinity building and the John W. Graham Library and travel north to the Larkin Building ramp. Trinity College main building also has ramp that connects to this path, located on the west door beside the chapel. For questions regarding access during an event, call the Trinity College Welcome Desk at 416-978-2522.

welcome@trinity.utoronto.ca

ACCESSIBLE PATH



The top photo shows the covered walkway that follows the south wall of the Larkin building. It connects the theatre entry to the accessible ramp. The bottom photo shows the corner of the Larkin building where the covered walkway connects to the walkway in front of the theatre.



The front entrance of the theatre is at the end of the path on the right-hand side of this photo.



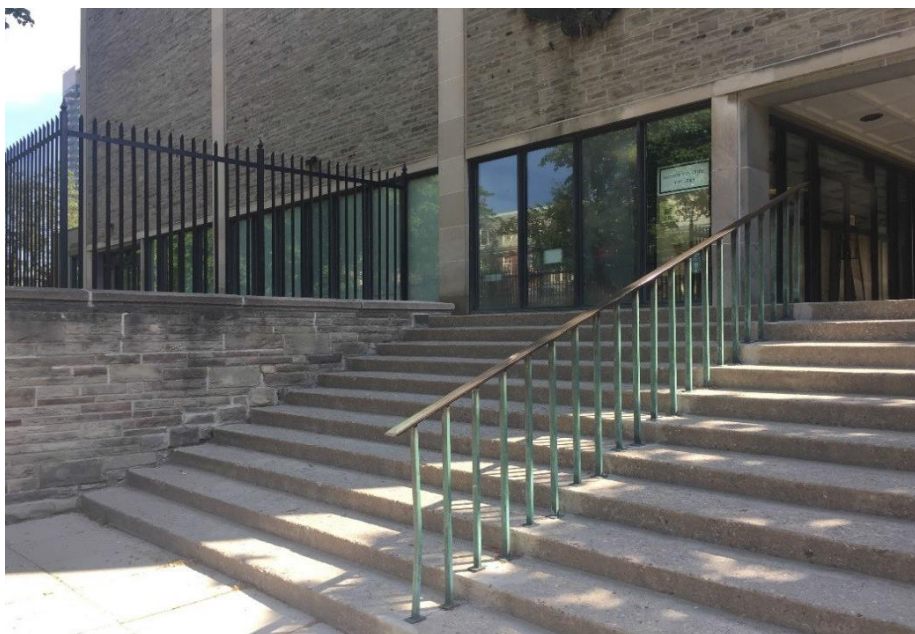
FRONT ENTRANCE

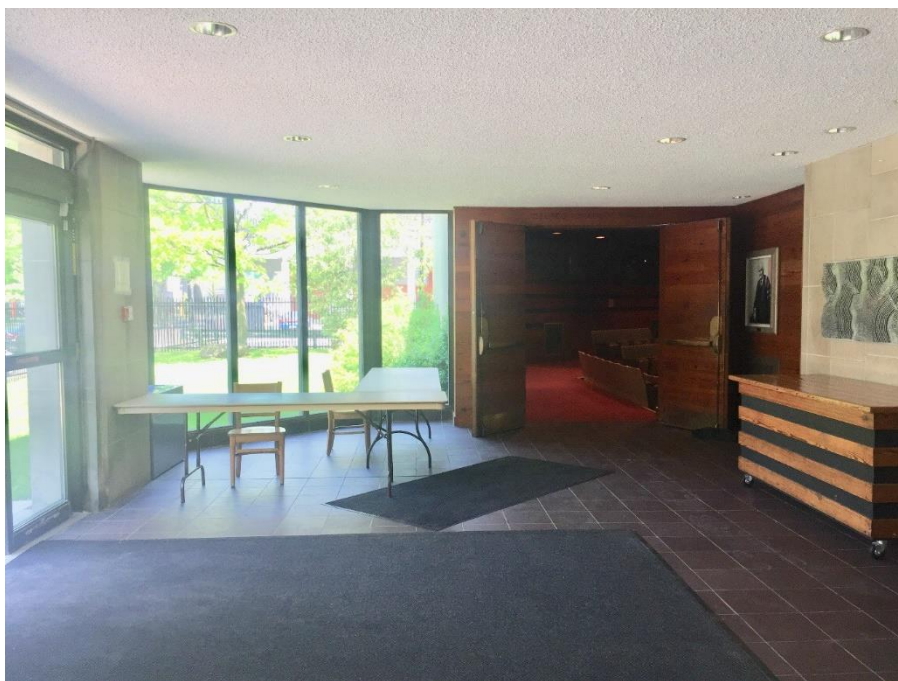
The top photo shows the theatre's front entrance. It connects to the Larkin Building west stairs and to the accessible route in the South.

The bottom entrance shows the Larkin Building west stairs. The front entrance on Devonshire Place can be accessed by a set of 11 shallow steps with a handrail that connects it to street level.

The lobby doors are automated sliding doors. If the doors are not working, the building may be closed.

Contact the Trinity Welcome Desk for assistance at 416-978-2522 and welcome@trinity.utoronto.ca.





THEATRE LOBBY

The theatre lobby is the gathering point for the theatre. It is from here that you can enter the theatre, access the washrooms, enter the Buttery, or drop by the office. The doors to the theatre space are located to the left when you enter the lobby. The photo to the left is looking north, toward the main doors. If you arrive and find the main doors locked, please wait. A technician will

arrive at the time scheduled by the event organizers to unlock the theatre.

The photo to the left shows the theatre office, which is on the right as you enter the lobby. Because the temperature in the office is difficult to regulate, the door is often closed. If someone is in the office and the door is open, (even slightly ajar), please knock and enter.

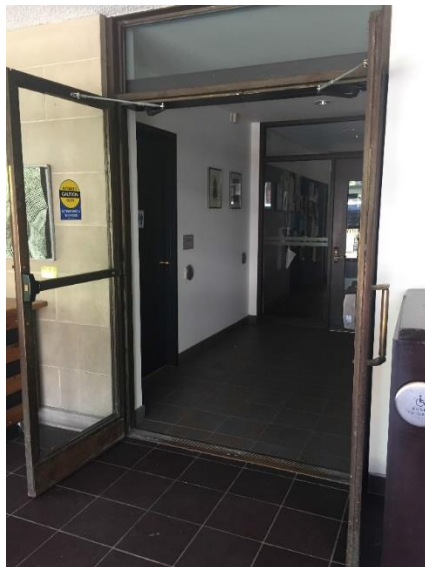
To schedule a time to meet with us, please call 416-978-4166 (leave a message) or email theatre@trinity.utoronto.ca.





ACCESSIBLE WASHROOMS

The Lobby-level washroom is all-gender and accessible. It is on the main floor, through the automated doors pictured on the left, which open to the vestibule that joins the theatre lobby to the Buttery (Larkin Building Cafeteria). It is equipped with a baby change table and an emergency alarm. The main theatre washrooms are in the basement of the theatre (access stairs located in the lobby, the washrooms are down four flights of stairs). When the Larkin building is open, there are accessible washrooms located on the second and third floors. (Use the elevator on the east side of the building to access them.)





MAIN AUDITORIUM

When you enter the theatre doors, you'll see our seating and stage. There is space for audience members in mobility devices at the back of the theatre.

Many shows will request that you turn off or silence your electronic devices, however this is at the discretion of the event organizers.

You will always be able to exit the theatre, but individual event organizers will decide if they will allow late entry or re-entry once the events are in progress.

The door pictured at the back of the theatre is our Emergency Exit. It is Exit ONLY.

Thank you!

We truly appreciate your patronage.



Trinity College

UNIVERSITY OF TORONTO

George Ignatieff Theatre

We hope you enjoy your time here and if you have any questions or concerns, please contact the Theatre Manager: 416 978-4166 and theatre@trinity.utoronto.ca

Acknowledgements

This visual venue guide was originally developed in 2018 by Vanessa Perruzza, Assistant to the Theatre Manager of the George Ignatieff Theatre, in collaboration with Susan Wolf, Accessibility Coordinator of the Toronto Fringe, and Sharon Reid, Theatre Manager of the George Ignatieff Theatre. The photos were taken by Vanessa Perruzza.

Revised Jan 3, 2023 /ser.